

# MONTHLY MEMBERSHIP PROGRESS REPORT

LOCATION ENGLAND

District 105 N

Results as of: 5/31/2023

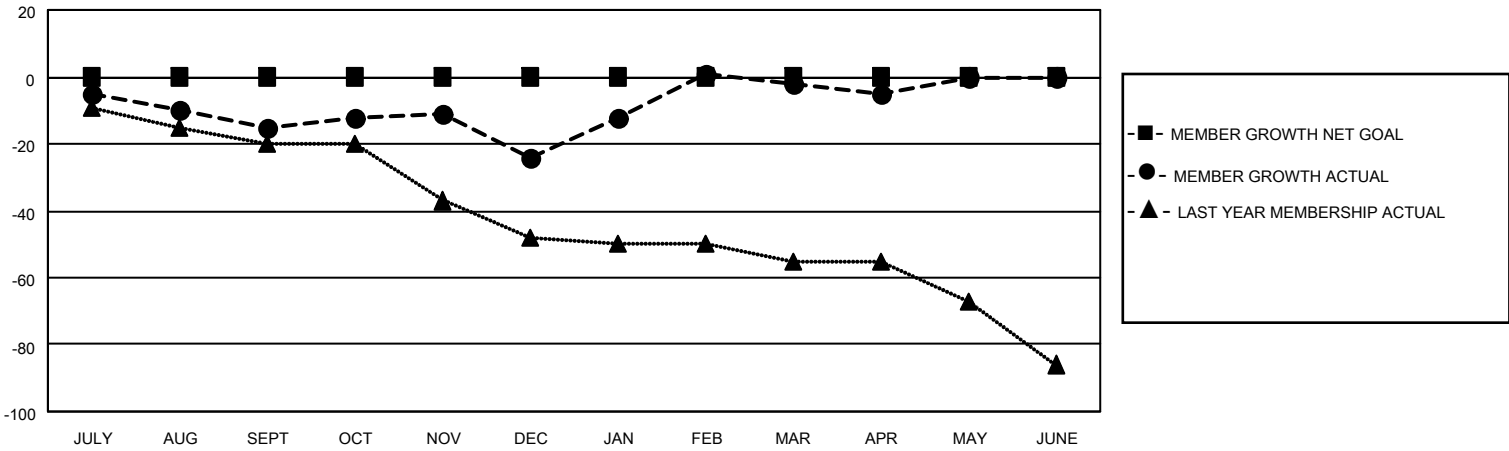
Clubs			
RESULTS FOR 2022-2023			
QUARTER	NEW CLUB GOAL	NEW CLUBS	DROPPED CLUBS
JULY/AUG/SEPT	0	0	0
OCT/NOV/DEC	0	0	0
JAN/FEB/MAR	0	0	0
APR/MAY/JUNE	0	0	0

Members			
RESULTS FOR 2022-2023			
QUARTER	MEMBER GROWTH NET GOAL	MEMBER GROWTH ACTUAL	DROPPED MEMBERS ACTUAL (including transfers)
JULY/AUG/SEPT	0	25	37
OCT/NOV/DEC	0	40	48
JAN/FEB/MAR	0	46	22
APR/MAY/JUNE	0	21	16

**GOALS AND ACTUAL NEW CLUBS CUMULATIVE**



**GOALS AND ACTUAL MEMBERS CUMULATIVE**



DROPPED CLUBS: 0	38 CLUBS OF 71 ADDED 1 OR MORE NEW MEMBERS	<p style="text-align: center;"><u>GENDER DISTRIBUTION</u></p> MALE 731 (68.06%) FEMALE 343 (31.94%) NON BINARY 0 (0.00%) PREFER NOT TO ANSWER 0 (0.00%)
<p style="text-align: center;"><u>DROPPED MEMBERS</u></p> DECEASED 24 CLUB CANCELLED 0 OTHER 99 <hr/> TOTAL 123	<a href="#">CLICK HERE FOR CUMULATIVE MEMBERSHIP DATA</a>	TOTAL FAMILY UNIT MEMBERS 134  FAMILY MEMBERS PAYING HALF DUES 68